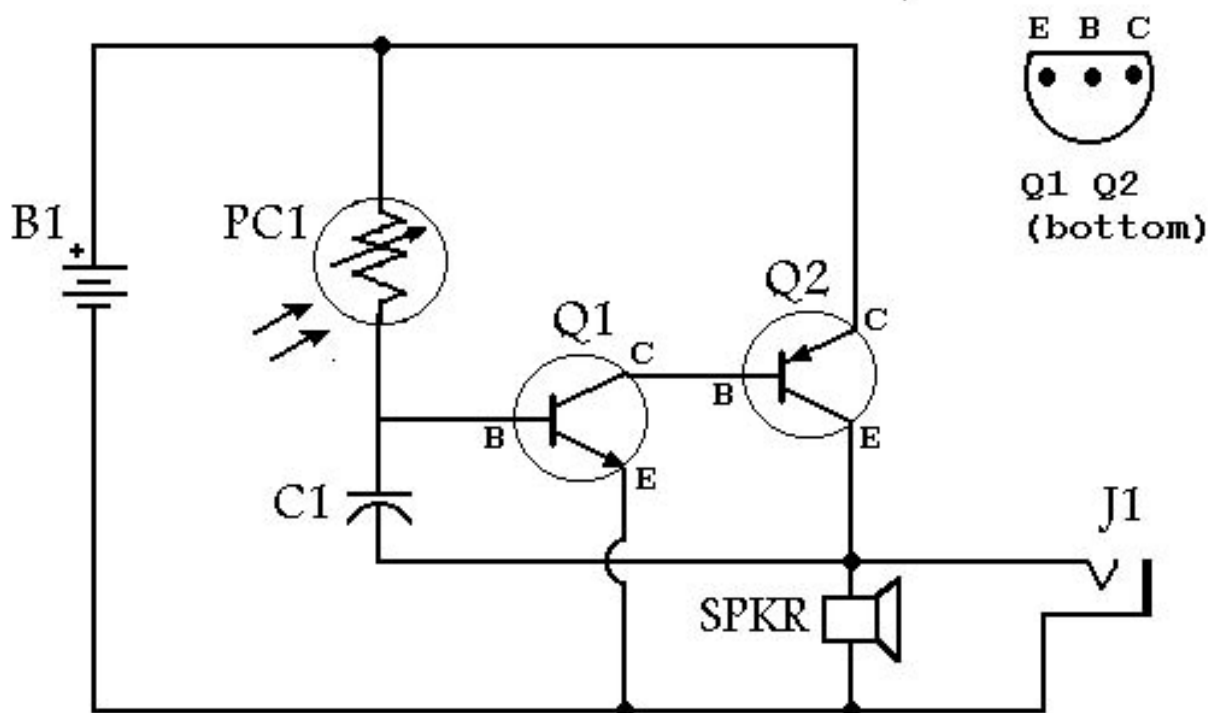


## 1. Test Operation

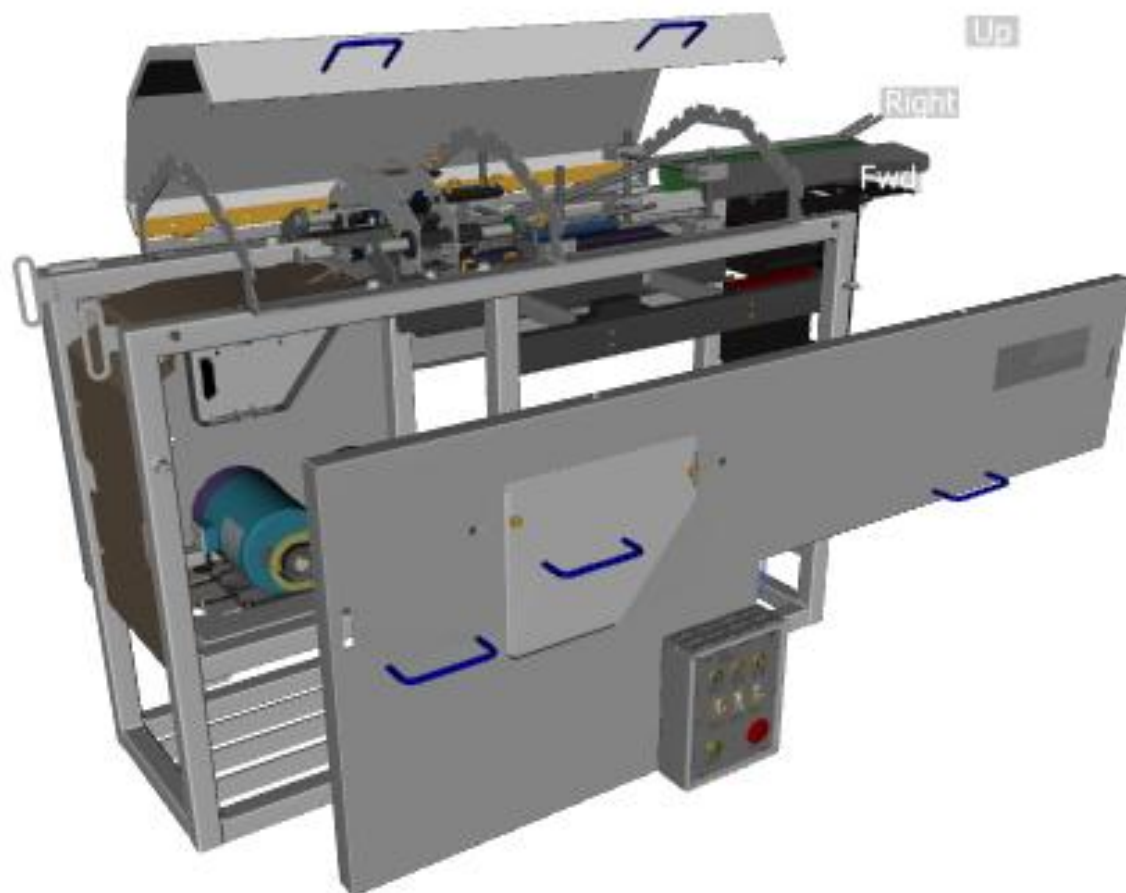
**Caution:** Check if machine is connected to the power source by switching it on.

- Turn on Workbench using the Control Panel.
- Ensure that movement is smooth in all both directions.
- Turn off Workbench using the Control Panel.

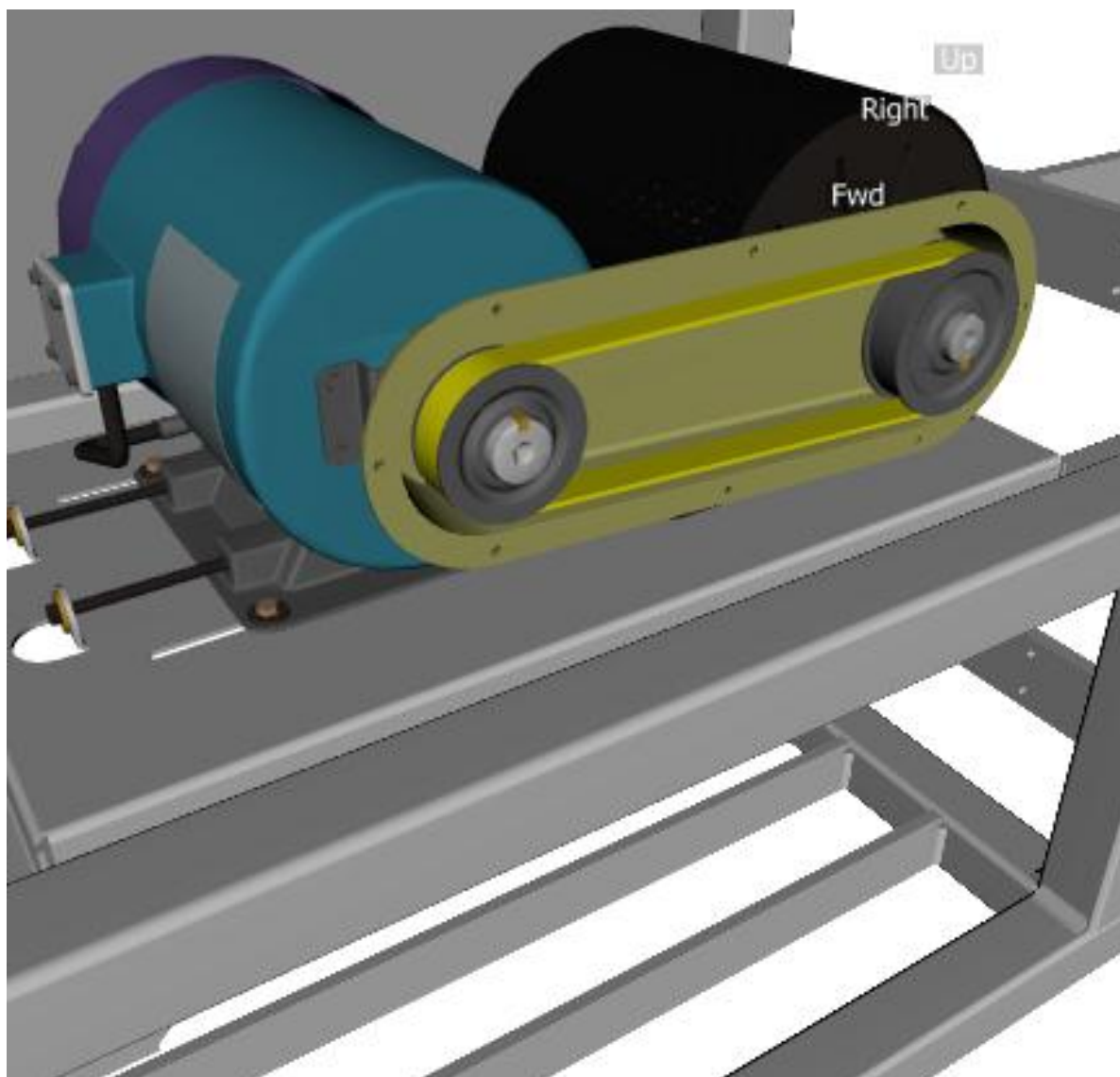


## 2. Remove Left Guard.

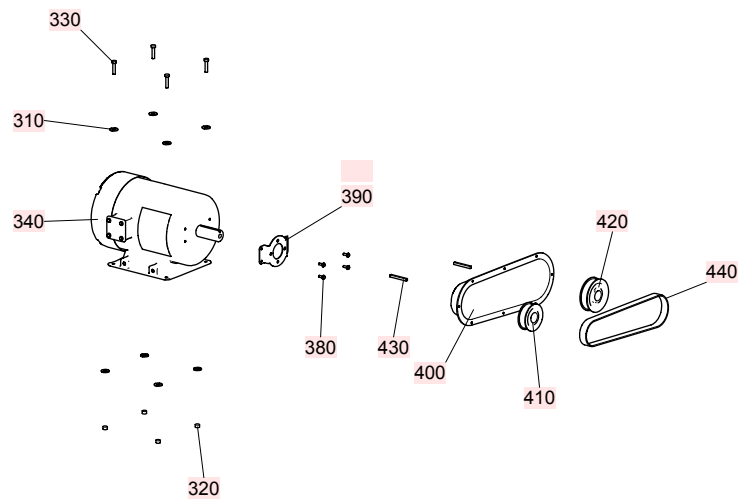
- Remove Bolts.
- Detach Left Guard.



3. Remove Drive Pulley.
  - a) Remove Belt from Pulleys.

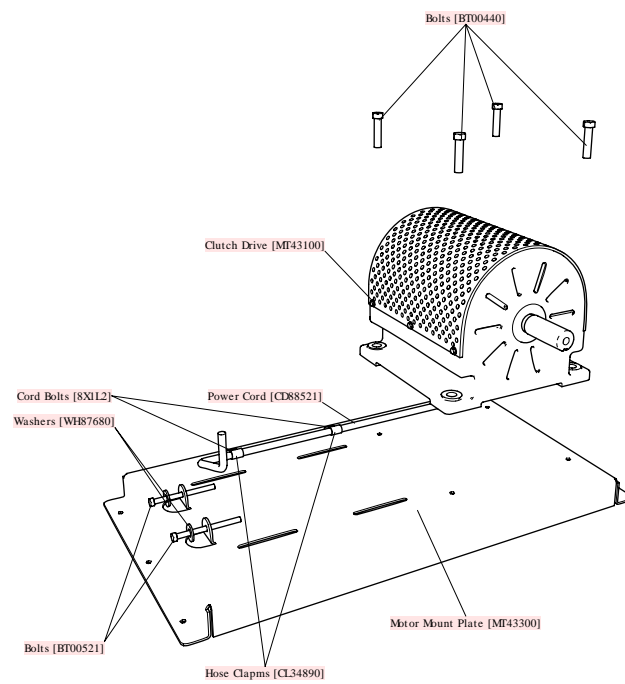


- b) Remove Key and Slave Pulley from Clutch Shaft.
  - c) Remove Key and Drive Pulley from Drive Motor Shaft.
  - d) Remove Pully Cover.
  - e) Remove Guard Bracket and Sheetmetal Screws.
- 4.** Remove Main Drive Motor.
- a) Disconnect Power Cord from Main Drive Motor.



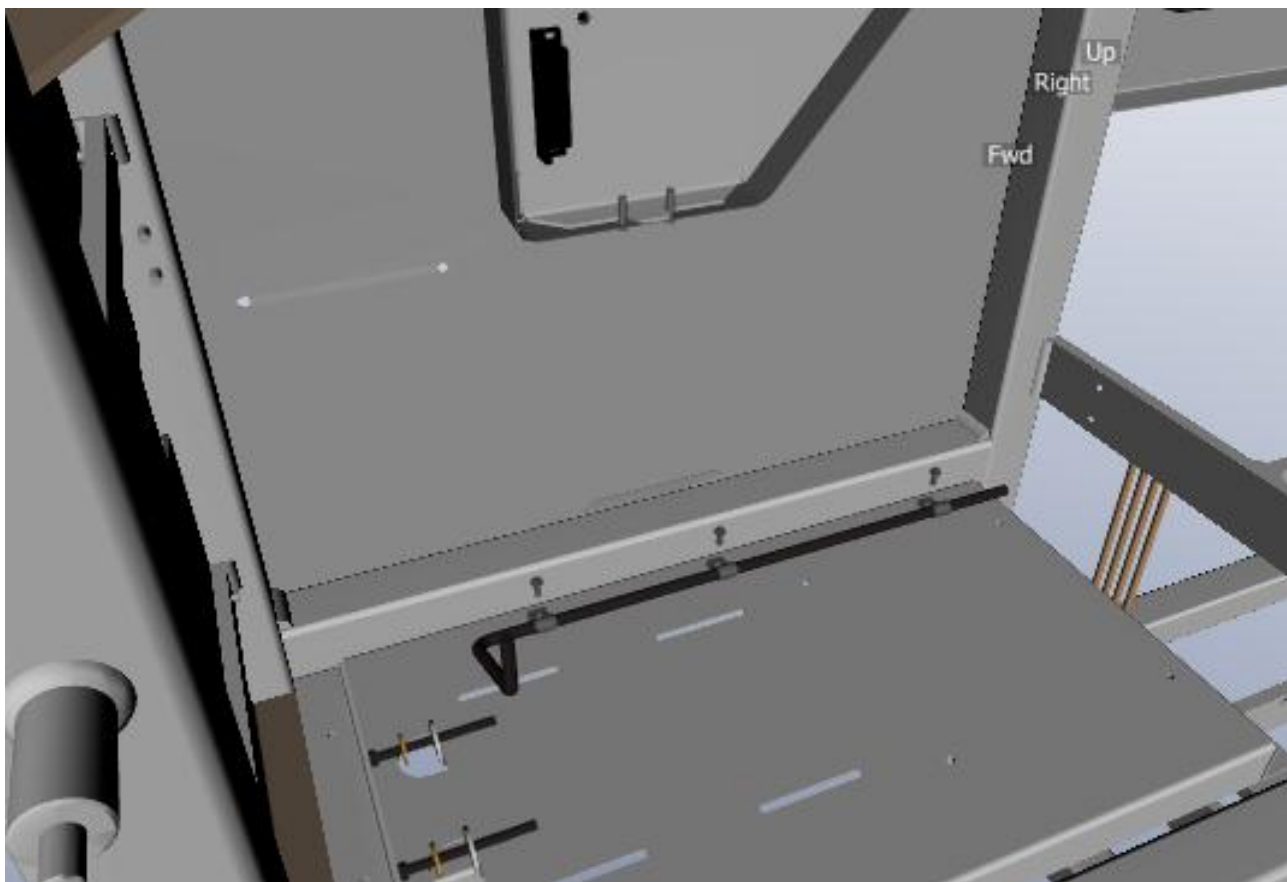
- b) Loosen the Bolts, preventing movement during operation.
- c) Loosen the Bolts, using a Wrench.
- d) Remove Bolts, Washers and Nuts.
- e) Remove Main Drive Motor.

**5. Remove Clutch Drive Assy and Bolts.**



**6. Remove Power Cord.**

- a) Remove the Clamp Screws.
- b) Remove Power Cord and Cable Clamps from Motor Mounting Plate.



7. Remove Motor Mounting Plate.
  - a) Detach Motor Mounting Plate from Workbench.
  - b) Remove Bolts and Washers from Motor Mounting Plate.

